



Austworld Commodities Pty Ltd

PRODUCT APPRAISAL REPORT 1320 Issue 7

LOGI VALVE Metal Bodied Ball Valves for Property Service Applications

AS 4796:2001 Water supply – Metal bodied and plastic -bodied ball valves for property service connection

Issue 1 Published: 10 August 2015

Issue 2 Published: 20 August 2015

Issue 3 Published: 9 March 2017

Issue 4 Published: 3 April 2018

Issue 5 Published: 14 January 2020

Issue 6 Published: 19 March 2020

Issue 7 Published: 21 January 2021

Document History

The following information indicates the changes made to this document.

Date	Version
19 May 2015	Peer Review
10 August 2015	Published
20 August 2015	Issue 2 Published
9 March 2017	Issue 3 Published
20 March 2018	Client Review
3 April 2018	Issue 4 Published
13 January 2020	Issue 5 Client Review
14 January 2020	Issue 5 Published
16 March 2020	Issue 6 Client Review
19 March 2020	Issue 6 Published
21 January 2021	Issue 7 Client Review
21 January 2021	Issue 7 Published

Peer Reviewers

Name/Title	Organisation	Date
Peter Pittard, WSAA Consultant	WSAA	28 May 2015
Jerry Sunarho	Sydney Water	2 June 2015
Adam Glasson	Goulburn Valley Water	19 June 2015
Colin Paxman	South East Water	19 June 2015
Carl Radford, Product Appraisal Manager	WSAA	6 August 2015
Carl Radford, Product Appraisal Manager	WSAA	20 August 2015
Peter Pittard, WSAA Consultant	WSAA	8 March 2017
Carl Radford, Product Appraisal Manager	WSAA	9 March 2017
Peter Pittard, WSAA Consultant	WSAA	9 March 2018
Carl Radford, Product Appraisal Manager	WSAA	3 April 2018
Peter Pittard, WSAA Consultant	WSAA	8 January 2020
Carl Radford, Product Appraisal Manager	WSAA	14 January 2020
Peter Pittard, WSAA Consultant	WSAA	15 March 2020
Carl Radford, Product Appraisal Manager	WSAA	19 March 2020
Peter Pittard, WSAA Consultant	WSAA	18 January 2021
Carl Radford, Product Appraisal Manager	WSAA	21 January 2021

Overview of WSAA

The Water Services Association of Australia (WSAA) is the peak industry body that supports the Australian Urban Water Industry. Its members and associate members provide water and sewerage services to approximately 20 million Australians and many of Australia's largest industrial and commercial enterprises.

The Association facilitates collaboration, knowledge sharing, networking and cooperation within the urban water industry. It is proud of the collegiate attitude of its members which has led to industry-wide approaches to national water issues.

WSAA can demonstrate success in the standardisation of industry performance monitoring and benchmarking, as well as many research outcomes of national significance. The WSAA Executive retains strong links with policy makers and legislative bodies and their influences, to monitor emerging issues of importance to the urban water industry. WSAA is regularly consulted and its advice sought by decision makers when developing strategic directions for the water industry.

WSAA was formed in 1995 as a non-profit organisation to foster the exchange of information relating to the provision of urban water services between industry, government and the community, and to promote sustainable water resource management.

The Association's main activities focus on four areas:

1. Influencing national and state policies on the provision of urban water services and sustainable water resource management;
2. Promoting debate on environmentally sustainable development and management of water resources and the community health requirements of public water supplies;
3. Improving industry performance and establishing benchmarks and industry leading practices for water service processes; and
4. Fostering the exchange of information on education, training, research, water and wastewater management and treatment and other matters of common interest.

Copyright

This document is copyrighted. Apart from any use as permitted under the Copyright Act 1968, no part of this document may be reproduced or transmitted in any form or by any means, electronically or mechanical, for any purpose, without the express written permission of Water Services Association of Australia Limited.

© Copyright 2021 by WATER SERVICES ASSOCIATION of Australia Limited **All rights reserved.**

CONTENTS

1 EXECUTIVE SUMMARY	5
1.1 Recommendations	5
2 THE APPLICANT.....	5
2.1 Austworld Commodities Pty Ltd	5
2.2 The Manufacturer.....	6
2.2.1 Logi Dezn	6
3 THE PRODUCT.....	6
4 SCOPE OF THE APPRAISAL.....	6
5 APPRAISAL CRITERIA.....	10
5.1 General	10
5.2 Quality Assurance Requirements	10
5.3 Performance Requirements	11
6 COMPLIANCE WITH APPRAISAL CRITERIA.....	11
6.1 Compliance with Quality Assurance Requirements	11
6.2 Compliance with Performance Requirements.....	11
6.2.1 Type testing	11
6.2.2 End connections.....	11
6.2.3 Suitability for contact with drinking water	12
6.2.4 Components material list.....	12
7 FITTING INSTRUCTIONS, TRAINING AND INSTALLATION	12
8 PRODUCT MARKING	12
9 PACKAGING AND TRANSPORTATION.....	13
10 PRODUCT WARRANTY	13
11 WATER AGENCY EXPERIENCE WITH THE PRODUCT OR FIELD TESTING REPORT	13
12 FUTURE WORKS.....	13
13 DISCLAIMER.....	13
13.1 Issue of Report.....	14
13.2 Limits on Reliance on Information and Recommendations.....	14
13.2.1 Disclaimer of liability.....	14
13.2.2 Intellectual Property and other rights.....	14
13.2.3 Need for independent assessment.....	14
13.3 No Updating	15
13.4 No Warranty.....	15
APPENDIX A – PRODUCT LITERATURE	16
APPENDIX B - QUALITY CERTIFICATIONS.....	45
APPENDIX D - SUPPLIER CONTACTS	54

1 EXECUTIVE SUMMARY

Austworld Commodities Pty Ltd is an Australian based stockist and distributor of plumbing and drainage products with distribution centres in Melbourne, Gold Coast, Adelaide and Sydney. Austworld was established in 1987 and also services Asia, Europe and the Middle East with its range of plumbing products.

Logi Dezign is a trading name of Austworld. The valves included in this Appraisal are manufactured in China by a joint venture company partly owned and operated by Austworld. The name and location of the manufacturing plant has been requested to remain commercial-in-confidence; however, a copy of the relevant and current ISO 9001 licence has been submitted for this Appraisal.

This Appraisal is for a range of LOGI VALVE metal-bodied ball valves for property service applications.

This Issue 7 is a replacement for the previous version of the appraisal which had reached its 5-year expiry date. It also includes some additional ball valves, WB25FBLH and WB25MBLH.

The ball valves included in this Appraisal consist of DN 20 and DN 25 service connection ball valves, service connection termination ball valves and right-angle meter assembly ball valves with various end connections. Ball valves with a telescopic arm and sub-metering kits are also included.

The ball valves are manufactured from dezincification resistant brass with Grade 316 stainless steel balls.

The ball valves are rated as PN 25 and are operated using a T handle with a lockable option. Some ball valves are also available with a lever or lockable handwheel option. Ball valves with a telescopic arm have a quarter turn hand wheel operator.

Lilac coloured ball valves are available for non-drinking water applications.

The manufacturer has a quality management system certified to ISO 9001:2015.

The LOGI VALVE ball valves have ISO Type 5 product certification to AS 4796:2016 Water Supply-Metal bodied and plastic bodied ball valves for property service connection.

This Appraisal has determined that LOGI VALVE metal bodied ball valves, as detailed in Section 4, meet the requirements of WSA PS- 274 *Ball Valves for Pressure Applications – Water Supply* and are therefore considered as 'fit-for-purpose'.

1.1 Recommendations

It is recommended that WSAA members, subject to any specific requirements of the member, accept or authorise the range of LOGI VALVE metal bodied ball valves and sub-metering kit, as detailed in Section 4 of this report, for use in property service connections for above-ground and below-ground water supply applications, provided they are installed in accordance with WSAA Codes and the manufacturer's requirements, where specified.

2 THE APPLICANT

2.1 Austworld Commodities Pty Ltd

Austworld is an Australian based stockist and distributor of plumbing and drainage products with distribution centres in Melbourne, Gold Coast, Adelaide and Sydney. Austworld was established in 1987 and also services Asia, Europe and the Middle East with its range of plumbing products.

2.2 The Manufacturer

2.2.1 Logi Dezign

Logi Dezign is a trading name of Austworld. The valves included in this Appraisal are manufactured in China by a joint venture company partly owned and operated by Austworld. The name and location of the manufacturing plant has been requested to remain commercial-in-confidence; however, a copy of the relevant and current ISO 9001 licence has been submitted for this Appraisal.

3 THE PRODUCT

LOGI VALVE metal bodied ball valves for property service connections are manufactured by Logi Dezign in conformity with AS 4796:2016 *Water supply-Metal bodied and plastic bodied ball valves for property service connection.*

The ball valve range consists of brass service connection ball valves, service connection termination ball valves and right-angle meter assembly ball valves with various end type combinations. The end connections include female thread (including swivel nut type), male thread, copper compression joint, polyethylene compatible mechanical compression joint and a press fit joint for copper.

The ball valves incorporate Grade 316 stainless steel balls.

Some ball valve configurations include a spring-loaded telescopic arm to facilitate ease of fitment in the field.

A sub metering kit consisting of a Grade 316 frame that houses a ball valve with a male thread to a swivel female meter thread on one end and a ball valve with a female thread to a swivel female meter thread with integral extendable arm on the other end, has also been included. This kit is intended to minimise meter installation times.

All ball valves have a bore diameter of 19 mm for DN 20 and 25 mm for DN 25. These attributes meet the requirements of AS 4796.

The ball valves are rated as PN 25 and are operated using a T handle with a lockable option. Some ball valves are also available with a lever or lockable handwheel option. Ball valves with a telescopic arm have a quarter turn hand wheel operator.

For non-drinking water applications, the valves are coated with a lilac-coloured thermal bonded polymeric coating applied in accordance with AS/NZS 4158.

Section 4 details the complete product range submitted for this Appraisal.

Data Sheets for the LOGI VALVE ball valve range are provided in Appendix A.

4 SCOPE OF THE APPRAISAL

The ball valves included in this appraisal are detailed in Tables 1 to 5 and Figures 1 to 5.



FIGURE 1 SERVICE CONNECTION BALL VALVES

TABLE 1 SERVICE CONNECTION BALL VALVES

DN			Product Codes
----	--	--	---------------

	End Connections	T Handle	H'Wheel	Lever	T Handle Lilac	H'Wheel Lilac
20	Female Thread to Male Thread	WB20MB WB20MBL	WB20MBWA	WB20MBLH	RWWB20MB	RWB20MBWA
25	Female Thread to Male Thread	WB25MB WB25MBL	WB25MBWA	WB25MBLH	RWWB25MB	RWB25MBWA

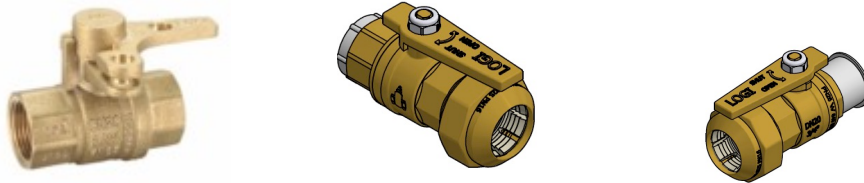


FIGURE 2 SERVICE CONNECTION TERMINATION BALL VALVES

TABLE 2

SERVICE CONNECTION TERMINATION BALL VALVES

DN	End Connections	Product Codes				
		T Handle	H'Wheel	Lever	T Handle Lilac	H'Wheel Lilac
15	Female Thread to Female Thread			W15FSS	W15FSSL	
20	Female Thread to Female Thread	WB20FB WB20FBL	WB20FBWA	W20FSS WB20FBLH	W20FSSL	
25	Female Thread to Female Thread	WB25FB WB25FBL		W25FSS WB25FBLH	W25FSSL	
32	Female Thread to Female Thread			W32FSS	W32FSSL	
40	Female Thread to Female Thread			W40FSS	W40FSSL	
50	Female Thread to Female Thread			W50FSS	W50FSSL	
20	Female Thread to Copper Press Fit		WP20FBWA			
20-25	Female Thread to PE	WPE2025F WPE2025FL WPE2025FP			WPE2025FRW WPE2025FRWP	
20-25	Loose nut to PE			WPE2025SM		

DN	End Connections	Product Codes				
		T Handle	H'Wheel	Lever	T Handle Lilac	H'Wheel Lilac
25-32	Female Thread to PE	WPE2532F WPE2532FL			WPE2532FRW	
25-32	Loose nut to PE			WPE2532SM		
20-25	Male Thread to PE	WPE2025M WPE2025ML	WPE2025MWA		WPE2025MRW	WPE2025MRWA
25-32	Male Thread to PE	WPE2532M WPE2532ML	WPE2532MWA		WPE2532MRW	WRE2532MRWA



FIGURE 3 RIGHT ANGLE METER ASSEMBLY BALL VALVES

TABLE 3

RIGHT ANGLE METER ASSEMBLY BALL VALVES

DN	End Connections	Product Codes			
		T Handle	H'Wheel	T Handle Lilac	H'Wheel Lilac
20	Cu Compression to Female Thread	WRA20		RWRA20	
25	Cu Compression to Female Thread	WRA25		RWRA25	
20	Female Thread to Female Thread	WRA20F	WRA20FWA	RWRA20F	RWRA20FWA
25	Female Thread to Female Thread	WRA25F	WRA25FWA	RWRA25F	RWRA25FWA
20	Female Thread to Copper Press Fit		WRWP20F		
20	Female Thread to Male Thread	WRA20M		RWRA20M	
20	Male Thread to Female Thread	WRA20MF			

20	Meter thread to Female Thread**	WRA20FSW			
----	---------------------------------	----------	--	--	--

** This valve is the base for water meter kit SA06.

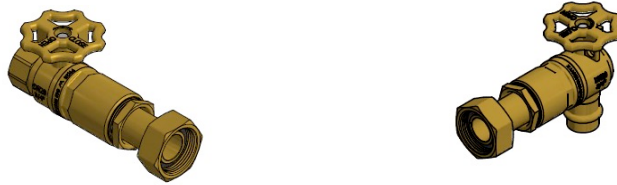


FIGURE 4 BALL VALVES WITH TELESCOPIC ARM

TABLE 4

BALL VALVES WITH TELESCOPIC ARM

DN	Type	End Connections	Product Code
20	Termination	Female Thread to Loose Nut with Handwheel	WB20EBL
20	Termination	Female Thread to Loose Nut with Lever	WB20FBLT
20	Termination	NSW Female thread to Loose Nut with Lever	WB20FBLTNSW
25	Termination	Female Thread to Loose Nut with Handwheel	WB25EBL
20	RA Meter	Copper Press Fit to Female Thread	WRWPE20
25	RA Meter	Copper Press Fit to Female Thread	WRWPE25



FIGURE 5 SUB METERING KIT

TABLE 5
SUB METERING KITS

DN	Description	Product Code
20	Includes two ball valves with swivel nuts to connect to meter thread. One valve has a male threaded end and the other valve has a telescopic arm with female threaded end.	SMK (comprises WB20FBLT and WB20MBLMK2)
20	Includes two ball valves with swivel nuts to connect to NSW meter thread. One valve has a male threaded end and the other valve has a telescopic arm with female threaded end.	SMKNSW (comprises WB20FBLTNSW and WB20MBLMK2)
20	Male thread to meter thread	WB20MBLMK1
20-25	Male thread to 25 NSW meter thread	WB20MBLMK2
20	Includes two ball valves with swivel nuts to connect to meter thread on one end and female threads on the other end.	SMK05 (comprises 2 x WB20FBLMK3)
25	Includes two ball valves with swivel nuts to connect to meter thread on one end and female threads on the other end.	SMK06 (comprises 2 x WB25FBLMK1)
20	Female thread to meter thread	WB20FBLMK3
25	Female thread to meter thread	WB25FBLMK1

5 APPRAISAL CRITERIA

5.1 General

Appraisal criteria is determined by the WSAA Product Appraisal Technical Advisory Group and regularly reviewed to ensure that the criteria reflect the requirements of WSAA members.

5.2 Quality Assurance Requirements

The WSAA Product Appraisal Technical Advisory Group accepts ball valves manufactured in compliance with AS 4796:2016 *Water supply-Metal bodied and plastic bodied ball valves for property service connection* and duly certified by means of an ISO Type 5 product certification scheme undertaken by a JAS-ANZ accredited Conformity Assessment Body (CAB) or by an international accreditation system recognised by JAS-ANZ.

The manufacturer is generally expected to have a production management and control system that has been duly accredited in accordance with AS/NZS ISO 9001 as a prerequisite to undergoing a product certification audit.

The ISO Type 5 Product Certification Scheme shall meet the criteria described in WSA TN-08.

5.3 Performance Requirements

LOGI VALVE ball valves have been appraised for compliance with AS 4796:2016 *Water supply- Metal bodied and plastic bodied ball valves for property service connection*. The following Product Specification is also relevant to this application:

WSA PS- 274 Ball Valves for Pressure Applications – Water Supply.

A copy of the Product Specification is available at the following link:

<https://www.wsaa.asn.au/shop/product/35716>

6 COMPLIANCE WITH APPRAISAL CRITERIA

6.1 Compliance with Quality Assurance Requirements

The following certificates have been submitted by Austworld:

- ISO 9001:2015 Certificate of Registration for Austworld's Chinese based manufacturing plant, issued by Zhejiang Quanpin Certification Co Ltd, a body accredited by CNAS, a JAS-ANZ recognised accreditation system. Austworld has requested that the name of their manufacturing plant remain commercial-in-confidence.
- AS 4796:2016 ISO Type 5 product certification licence No. 3020 issued to Logi Dezin by Australian Certification Services Ltd.

6.2 Compliance with Performance Requirements

6.2.1 Type testing

Austworld has provided type test results for a DN 20 right angle meter assembly ball valve and a DN 25 service connection ball valve to demonstrate compliance to the performance requirements of AS 4796. Queensland Testing Laboratory Pty Ltd, NATA Accredited Laboratory No. 14783, conducted the tests on the DN 20 ball valve and Prove Standards and Engineering Pty Ltd, NATA Accredited Laboratory No. 18640, conducted the tests on the DN 25 ball valve. Austworld advises that 100% pressure testing is conducted on a batch release basis.

Hydrostatic tests have been completed to demonstrate an Allowable Operating Pressure of PN 25. The ball valves nominated within the scope of this Appraisal are marked PN 25.

Type test results have been submitted from Prove Standards and Engineering Pty Ltd for the PN 25 and PN 32 PE compatible compression joints using PN 12.5 pipe to demonstrate suitability. A leak tightness test when subjected to bending and a pull-out test were successfully completed in accordance with AS/NZS 4129.

The ISO Type 5 certification offers assurance that the product is manufactured with adequate process and quality controls to ensure compliance with the nominated Product Standard.

6.2.2 End connections

The LOGI VALVE ball valves are offered with various end connections.

- Female Thread

These threads are parallel complying with AS ISO 7.1 Series Rp. A swivel nut version is also available for some ball valves.

- Male Thread

These threads are tapered complying with AS ISO 7.1 Series R.

- PE Compatible Mechanical Compression

These joints comply with AS/NZS 4129:2008 *Fittings for polyethylene (PE) pipes* and have been type tested by Prove Standards and Engineering Pty Ltd and included in WSAA Product

Appraisal 1601. Austworld confirms that the joint design is suitable for PN 12.5 and PN 16 PE 100 pipe to AS/NZS 4130. The design of the joint incorporates a positive stop which prevents over tightening.

- Copper Compression

These joints comply with AS3688:2016 Water supply and gas systems – *Metallic fittings and end connectors*.

- Press Fit for Copper

These joints comply with AS3688:2016 Water supply and gas systems – *Metallic fittings and end connectors*.

- Female nuts for meters

These joints are compatible with the threaded ends of water meters. NSW specifications differ from other Australian states.

6.2.3 Suitability for contact with drinking water

Austworld has submitted a Test Report from NATA Accredited Australian Water Quality Centre, dated 18 August 2015, for a DN100 in line ball valve to demonstrate compliance with AS/NZS 4020:2005 *Testing of products for use in contact with drinking water*, using a scaling factor of 0.01.

6.2.4 Components material list

The material specifications for the components used for LOGI VALVE metal bodied ball valves are given in Table 6.

All copper alloy components are manufactured from EN 12164 Grade CW602N. This alloy is a leaded arsenical brass (CuZn36Pb2As) listed as a Category 1 alloy in AS 2345 and is approximately equivalent to Grade C35200 of AS/NZS1567. A typical test certificate has been submitted to demonstrate compliance.

TABLE 6
LOGI VALVE COMPONENTS MATERIAL LIST

Component	Material	Standard	Grade
Body	Copper Alloy	EN 12164	CW602N
Body Cap	Copper Alloy	EN 12164	CW602N
Seal	PTFE	-	-
Ball	Stainless Steel	ASTM A276	316
Spindle	Copper Alloy	EN 12164	CW602N
Handle	Copper Alloy	EN 12164	CW602N
Retaining Ring	Plastic	-	PA66
O-Rings	EPDM	ASTM D2000	IRHD 70
Compression Nut	Copper Alloy	EN 12164	CW602N

7 FITTING INSTRUCTIONS, TRAINING AND INSTALLATION

Ball valves are standard water industry products. General specification information is shown in the data sheets in Appendix A.

8 PRODUCT MARKING

The LOGI VALVE ball valves have the following markings conforming to AS 4796:

- Manufacturer's name or trademark – LOGI
- Nominal size – DN 20, DN25
- Allowable Operating Pressure – PN25
- Certification Logo and Licence No.
- Batch marking
- The number of this standard

9 PACKAGING AND TRANSPORTATION

Ball valves are packaged in individual plastic bags and packed into cardboard cartons for handling and delivery.



FIGURE 6 PACKAGING

10 PRODUCT WARRANTY

The products are covered by the normal commercial and legal requirements of the *Competition and Consumer Act 2010 (Cth)*, which covers manufacture to the relevant standard, and details of Austworld Commodities Pty Ltd's warranty is included in their terms and conditions of sale.

11 WATER AGENCY EXPERIENCE WITH THE PRODUCT OR FIELD TESTING REPORT

Ball valves are considered standard products and installation trials were not required as part of this Appraisal.

12 FUTURE WORKS

There are no outstanding future works items.

13 DISCLAIMER

This Product Appraisal Report (Report) is issued by the Water Services Association of Australia Limited on the understanding that:

This Report applies to the product(s) as submitted. Any changes to the product(s) either minor or major shall void this Report.

To maintain the recommendations of this Report any such changes shall be detailed and notified to the Product Appraisal Manager for consideration and review of the Report and appropriate action. Appraisals and their recommendations will be the subject of continuous review dependent upon the satisfactory performance of products.

WSAA reserves the right to undertake random audits of product manufacture and installation. Where products fail to maintain appraised performance requirements the appraisal and its recommendations may be modified and reissued. Appraisal reports will be reviewed and reissued at regular intervals not exceeding five (5) years.

The following information explains a number of very important limits on your ability to rely on the information in this Report. Please read it carefully and take it into account when considering the contents of this Report.

Any enquiries regarding this report should be directed to the Program Manager, Carl Radford, Phone: 03 8605 7601 email carl.radford@wsaa.asn.au.

13.1 Issue of Report

This Report has been published and/or prepared by the Water Services Association of Australia Limited and nominated Project Manager and peer group of technical specialists (the Publishers).

The Report has been prepared for use within Australia only by technical specialists that have expertise in the function of products such as those appraised in the Report (the Recipients).

By accepting this Report, the Recipient acknowledges and represents to the Publisher(s) and each person involved in the preparation of the Report that the Recipient has understood and accepted the terms of this Disclaimer.

13.2 Limits on Reliance on Information and Recommendations

13.2.1 Disclaimer of liability

Neither the Publisher(s) nor any person involved in the preparation of the Report accept(s) any liability for any loss or damage suffered by any person however caused (including negligence or the omission by any person to do anything) relating in any way to the Report or the product appraisal criteria underlying it. This includes (without limitation) any liability for any recommendation or information in the Report or any errors or omissions.

13.2.2 Intellectual Property and other rights

The Water Services Association of Australia Limited does not undertake any assessment of whether the importation, manufacture, sale or use of the Product the subject of this Report infringes the intellectual property rights or proprietary rights of any person. Recipients of the report should undertake their own assessment of whether (as relevant) the importation, manufacture, sale or use of the relevant Products infringe the intellectual property rights or other proprietary rights of any person. If the Product infringes intellectual property rights or other proprietary rights, there is potential for the supply of the Products to be interrupted.

From time to time the Water Services Association of Australia Limited and the other Publishers may receive notice of allegations that the importation, manufacture, sale or use of the Product infringes intellectual property rights or other proprietary rights. The Water Services Association of Australia Limited's policy is to not refer to such allegations in its reports or take any other steps to put Recipients on notice of such allegations, unless and until it is aware that the allegations have been admitted or proved in Court. As such, Recipients acknowledge, agree and accept that the Water Services Association of Australia Limited may have information in its possession about intellectual property rights infringement allegations or other infringement allegations in relation to the Product which are not referred to or disclosed in this Report and which are not otherwise communicated to Recipients.

13.2.3 Need for independent assessment

The information and any recommendation contained (expressly or by implication) in this Report are provided in good faith (and subject to the limitations noted in this Report). However, you should treat the information as indicative only. You should not rely on that information or any such recommendation except to the extent that you reach an agreement to the contrary with the Publisher(s).

This Report does not contain all information that a person might require for the purposes of assessing any product discussed or appraised within it (Product). The product appraisal criteria used in preparing this Report may not address all relevant aspects of the Product.

Recipients should seek independent evidence of any matter which is material to their decisions in connection with an assessment of the Product and consult their own advisers for any technical information required. Any decision to use the Product should take into account the reliability of that independent evidence obtained by the Recipient regarding the Product.

Recipients should also independently verify and assess the appropriateness of any recommendation in the Report, especially given that any recommendation will not take into account a Recipient's particular needs or circumstances.

WSAA has not evaluated the extent of the product liability and professional indemnity insurance that the provider of the product maintains. Recipients should ensure that they evaluate the allocation of liability for product defects and any professional advice obtained in relation to the product or its specification including the requirements for product liability and professional indemnity insurance.

13.3 No Updating

Neither the Publisher(s) nor any person involved in the preparation of this Report [has] [have] any obligation to notify you of any change in the information contained in this Report or of any new information concerning the Publisher(s) or the Product or any other matter.

13.4 No Warranty

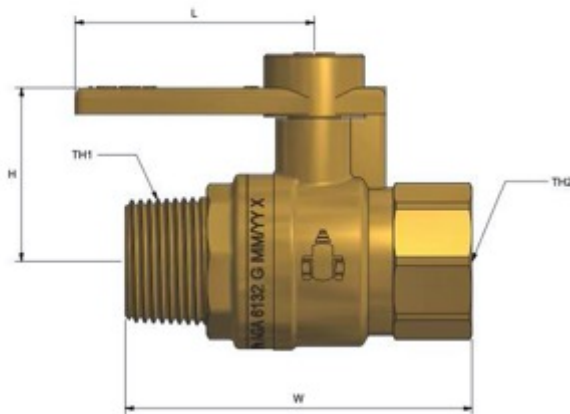
The Publisher(s) do[es] not, in any way, warrant that steps have been taken to verify or audit the accuracy or completeness of the information in this Report, or the accuracy, completeness or reasonableness of any recommendation in this Report.

APPENDIX A – PRODUCT LITERATURE

WATER SERVICE BALL VALVES

Inline MI X FI Lockable

Product Specifications



Specifications

Working temperature -20°C to 120°C
 Max. pressure rating 2500kPa

Sizing Chart [MM]

	L	H	W	TH1	TH2
WB20MBL	50	36	73	R 3/4"	Rp 3/4"
WB25MBL	56	42	87	R 1"	Rp 1"

Features

- Watermark approved
- DR Brass
- Full Bore
- 100% pressure tested
- Lockable both ON and OFF
- Tested and certified to AS 4796

Material Chart

Part	Material
Seal	PTFE
Nut	Stainless Steel
Body	DR Brass
Handle	DR Brass
Ball	Stainless Steel
Cap	DR Brass
O Ring	FKM

For more information on Logi Civil, contact:
 Austworld 15 Activity Crescent, Molendinar, Queensland 4214 Australia
 P. 1300 780 430 F. 1300 780 441 E. info@austworld.com.au

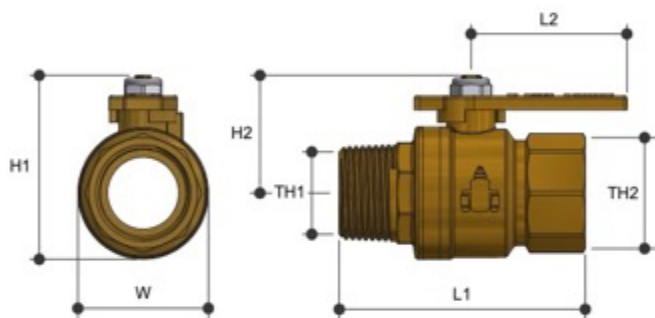
Austworld Pty Ltd. All rights reserved 2018.
 Austworld and Logi Civil are registered trade mark belonging to Austworld Pty Ltd.



WATER SERVICE BALL VALVES

Inline FI X MI Long Handle

Product Specifications



Specifications

Working temperature 1°C to 99°C
 Max. pressure rating 2500kPa

Sizing Chart (MM)

	L1	L2	H1	H2	W	TH1	TH2
WB20MBUH	73	55	55	37	37	R 3/4"	Rp 3/4"
WB25MBUH	87	55	64	41	46	R 1"	Rp 1"

Features

- Watermark approved
- DR Brass
- Full Bore
- 100% pressure tested
- Tested and certified to AS 4796

Material Chart

Part	Material
Seal	PTFE
Nut	Stainless Steel
Body	DR Brass
Handle	DR Brass
Ball	Stainless Steel
Cap	DR Brass
O Ring	FKM
Spindle	DR Brass

For more information on Logi Civil, contact:
 Austworld 15 Activity Crescent, Malendinar, Queensland 4214 Australia
 P. 1300 780 430 F. 1300 780 441 E. info@austworld.com.au

Austworld Pty Ltd. All rights reserved 2018.
 Austworld and Logi Civil are registered trade mark belonging to Austworld Pty Ltd.





BALL VALVE WATERMARKED METER STOP M X F WHEEL HANDLE

WBMBWA

Series

Specifications

- Working temperature 0°C to 90°C
- Max. pressure rating 2500kPa

Features

- DZR Brass
- Watermark approved
- 316 Stainless Steel Ball and Spindle
- 100% pressure tested



Austworld
PO Box 311
Ashmore City
QLD 4214

P: 1300 780 430
F: 1300 780 441
E: info@austworld.com.au
W: www.austworld.com.au

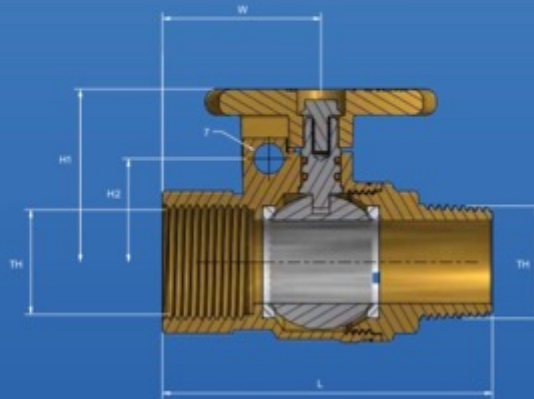


DECLARATION BY PART OF AUSTWORLD COMMITMENT TO QUALITY PRODUCTS: AUSTWORLD RESERVES THE RIGHT TO ALTER THE DESIGN OR SPECIFICATIONS OF ITS PRODUCT WITHOUT NOTICE. THE PRODUCT IMAGE IS AN ILLUSTRATION AND NOT AN EXACT REPRESENTATION OF THE PRODUCT.

Ver 1.0



BALL VALVE WATERMARKED METER STOP M X F WHEEL HANDLE



Sizing Chart MM

	H1	H2	W	L	TH
WB20MBWA	40	24	36.5	76	Rp 3/4"
WB25MBWA	44	28	42.5	89	Rp 1"



Austworld
PO Box 311
Ashmore City
QLD 4214

P: 1300 780 430
F: 1300 780 441
E: info@austworld.com.au
W: www.austworld.com.au



DECLARATION: AUSTWORLD IS COMMITTED TO QUALITY PRODUCTS. AUSTWORLD RESERVES THE RIGHT TO ALTER THE DESIGN OR SPECIFICATIONS OF ITS PRODUCTS WITHOUT NOTICE. THE PHOTOGRAPHS AND DRAWINGS ARE FOR INFORMATION ONLY AND MAY NOT BE AN EXACT REPRESENTATION OF THE PRODUCT.

Ver. 1.0



BALL VALVE DUAL WATERMARK APPROVED BRASS LOCKABLE HANDLE F X F

WBFBL

Series

Specifications

- Working temperature
WATER -20°C to 120°C
GAS -20°C to 120°C
- Max. pressure rating
WATER 2500 kPa
GAS 1050 kPa

Features

- Watermarked and AGA approved
- Full Bore
- 100% pressure tested
- DR brass handle



Austworld
PO Box 311
Ashmore City
QLD 4214

P: 1300 780 430
F: 1300 780 441
E: info@austworld.com.au
W: www.austworld.com.au

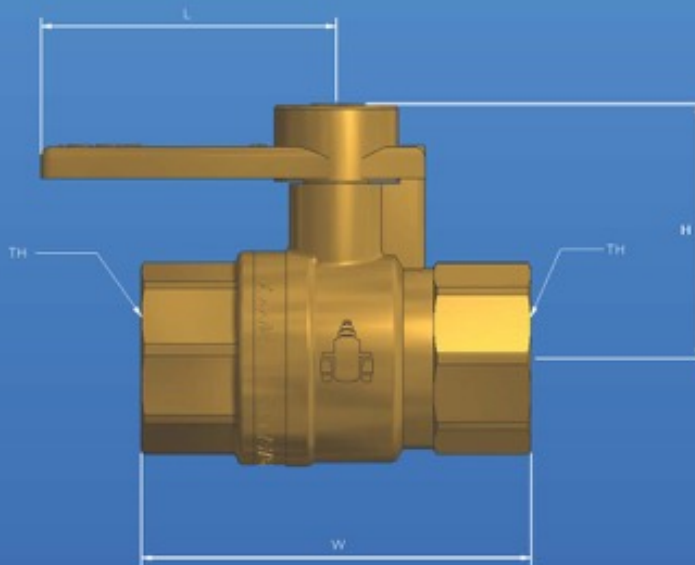


ATTENTION: AS PART OF AUSTWORLD'S COMMITMENT TO QUALITY PRODUCTS, AUSTWORLD RESERVES THE RIGHT TO ALTER THE DESIGN OR SPECIFICATION OF ITS PRODUCT WITHOUT NOTICE.

Ver 1.0



BALL VALVE DUAL WATERMARK APPROVED BRASS LOCKABLE HANDLE F X F



Sizing Chart MM

	H	L	W	TH
WB20FBL	30	55	86	Rp 3/4"
WB25FBL	34	55	81	Rp 1"

Material Chart

Part	Material
Body	DR Brass
Body Nut	DR Brass
Spindle	DR Brass
Ball	SS316
Seal	PTFE
O Ring	FKM (Viton)
Handle	DR Brass
Handle Nut	Stainless Steel



Austworld
PO Box 311
Ashmore City
QLD 4214

P: 1300 780 430
F: 1300 780 441
E: info@austworld.com.au
W: www.austworld.com.au



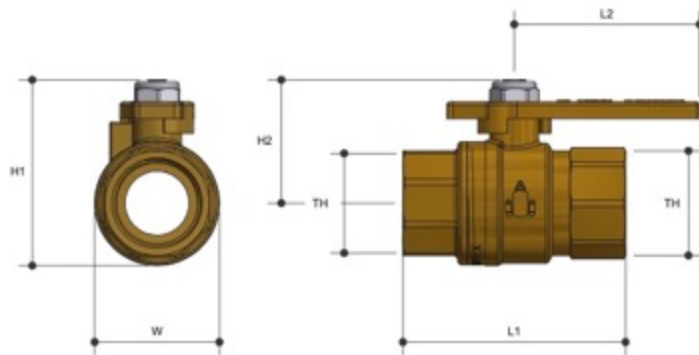
ATTENTION: AS PART OF AUSTWORLD'S COMMITMENT TO QUALITY PRODUCTS, AUSTWORLD RESERVES THE RIGHT TO ALTER THE DESIGN OR SPECIFICATION OF ITS PRODUCT WITHOUT NOTICE.

Ver 1.0

WATER SERVICE BALL VALVES

Inline FI X FI Long Handle

Product Specifications



Specifications

Working temperature 1°C to 90°C
 Max. pressure rating 2500kPa

Sizing Chart (MM)

	L1	L2	H1	H2	W	TH
WB20FBLH	66	55	55	37	37	Rp 3/4"
WB25FBLH	81	55	65	41	46	Rp 1"

Features

- Watermark approved
- DR Brass
- Full Bore
- 100% pressure tested
- Tested and certified to AS 4796

Material Chart

Part	Material
Seal	PTFE
Nut	Stainless Steel
Body	DR Brass
Handle	DR Brass
Ball	Stainless Steel
Cap	DR Brass
O Ring	FKM
Spindle	DR Brass

For more information on Logi Civil, contact:
 Austworld 15 Activity Crescent, Molendinar, Queensland 4214 Australia
 P. 1300 780 430 F. 1300 780 441 E. info@austworld.com.au

Austworld Pty Ltd. All rights reserved 2018.
 Austworld and Logi Civil are registered trade mark belonging to Austworld Pty Ltd.

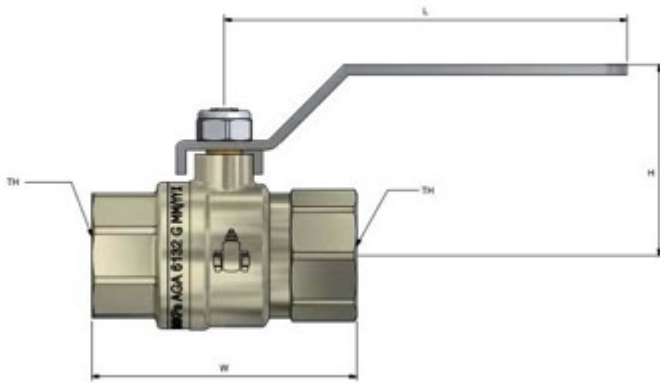


WFSS Series

Ball Valve Dual Approved Level Handle F X F - SS Ball



Product Specifications



Features

Watermark and AGA approved

Full bore

100% pressure tested

Available in sizes 15mm [1/2"] to 50mm [2"]

Blow proof spindle

Stainless steel handle

Stainless steel ball

Specifications

Working temperature -20°C to 120°C

Maximum pressure rating Water 2500kPa Gas 2100kPa

Sizing Chart MM

	L	H	W	TH
W15FSS	101	44	58	Rp1/2"
W20FSS	101	48	66	Rp3/4"
W25FSS	101	52	81	Rp1"
W32FSS	140	71	92	Rp1 1/4"
W40FSS	140	77	102	Rp1 1/2"
W50FSS	140	85	121	Rp2"

Material Chart

Part	Material
Body	Brass
Seal	PTFE
Ball	Stainless Steel
Bonnet	Brass
Spindle	Brass
O Ring	FKM
Handle	Stainless Steel
Lock Nut	Stainless Steel

For more information on Logi Valve, contact:
 Austworld 15 Activity Crescent, Molendinar, Queensland 4214 Australia
 P. 1300 780 430 F. 1300 780 441 E. info@austworld.com.au

Austworld Pty Ltd. All rights reserved 2018. Austworld and Logi Valve are registered trade mark belonging to Austworld Pty Ltd.

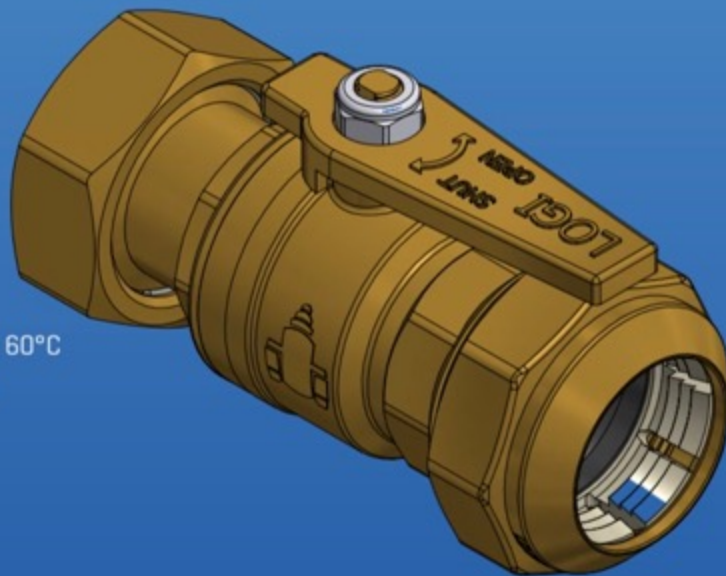




BALL VALVE WATERMARKED BRASS HANDLE

WPESM

Series



Specifications

- Working temperature -20°C to 60°C
- Max. pressure rating 1600kPa

Features

- DR Brass handle
- Watermark approved
- Full Bore
- 100% pressure tested
- No disassembly required, pipe can be inserted without disassembling the fitting
- Triple lip seal
- No fidly thimbles or grab rings
- Spare parts available



Austworld
PO Box 311
Ashmore City
QLD 4214

P: 1300 780 430
F: 1300 780 441
E: info@austworld.com.au
W: www.austworld.com.au

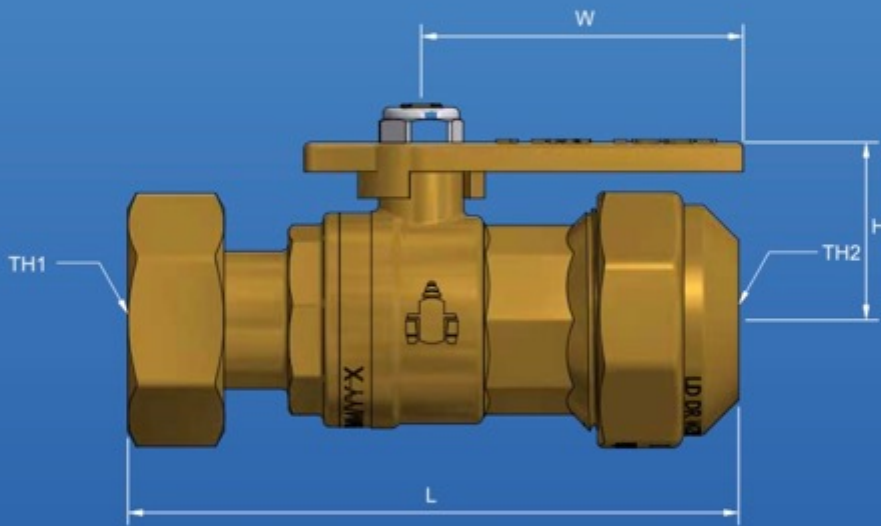


TRADE MARK AUTHORITY OF AUSTRALIA GOVERNMENT REGISTERED PRODUCT. AUSTWORLD ASSUMES THE RISK TO COVER THE QUALITY PERFORMANCE OF ITS PRODUCT WITHOUT WARRANTY. THE PRODUCT IMAGE SHOWN, WITH OR WITHOUT ILLUSTRATION, IS APPROXIMATE AND MAY NOT BE AN EXACT REPRESENTATION OF THE PRODUCT.

Ver 1.0



BALL VALVE WATERMARKED BRASS HANDLE



Sizing Chart MM

	L	H	W	TH1	TH2
WPE2025SM	120	30	55	31.18 - 31.35	25PE
WPE2532SM	145	34	55	37.53 - 37.70	32PE



Austworld
PO Box 311
Ashmore City
QLD 4214

P: 1300 780 430
F: 1300 780 441
E: info@austworld.com.au
W: www.austworld.com.au





BALL VALVE WATERMARKED. POLY TO FEMALE

WPEF

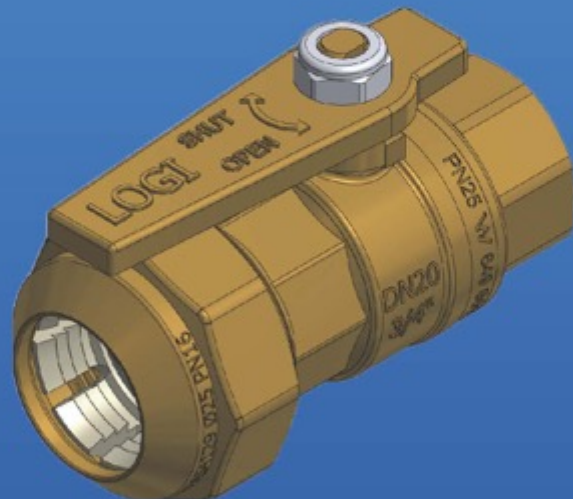
Series

Specifications

- Working temperature -20°C tpo 60°C
- Max. pressure rating 2500 kPa

Features

- DR Brass handle
- Watermark approved
- Full bore
- 100% pressure tested



Austworld
PO Box 311
Ashmore City
QLD 4214

P: 1300 780 430
F: 1300 780 441
E: info@austworld.com.au
W: www.austworld.com.au

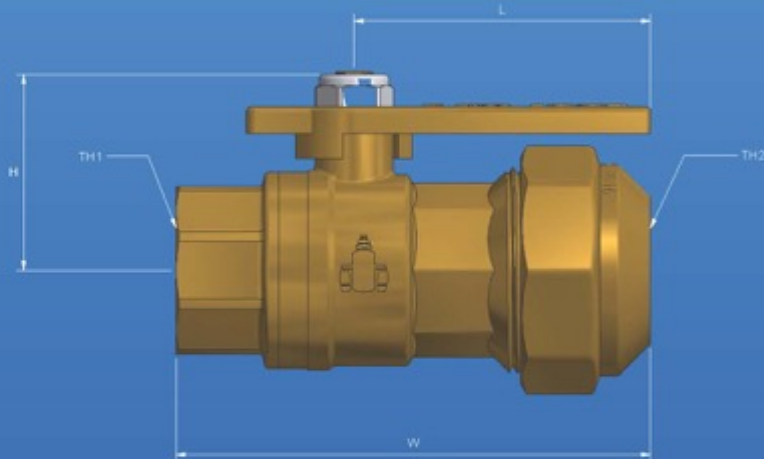


ATTENTION: AS PART OF AUSTWORLD'S COMMITMENT TO QUALITY PRODUCTS, AUSTWORLD RESERVES THE RIGHT TO ALTER THE DESIGN OR SPECIFICATION OF ITS PRODUCT WITHOUT NOTICE.

Ver 1.0



BALL VALVE WATERMARKED. POLY TO FEMALE



Material Chart

Part	Material
Body	DR Brass
Body Nut	DR Brass
Spindle	SS 316
Ball	SS 316
Seal	PTFE
O Ring	Viton
Handle	DR Brass
Retaining Ring	POM
Pipe Seal	EDPM
Handle Nut	SS 316

Sizing Chart MM

	L	H	W	TH1	TH2
WPE2025F	55	36	88	Rp 3/4"	25PE
WPE2532F	55	40	101	Rp 1"	32PE



Austworld
PO Box 311
Ashmore City
QLD 4214

P: 1300 780 430
F: 1300 780 441
E: info@austworld.com.au
W: www.austworld.com.au



ATTENTION: AS PART OF AUSTWORLD'S COMMITMENT TO QUALITY PRODUCTS, AUSTWORLD RESERVES THE RIGHT TO ALTER THE DESIGN OR SPECIFICATION OF ITS PRODUCT WITHOUT NOTICE.

Ver 1.0



BALL VALVE WATERMARKED. POLY TO MALE

WPEM

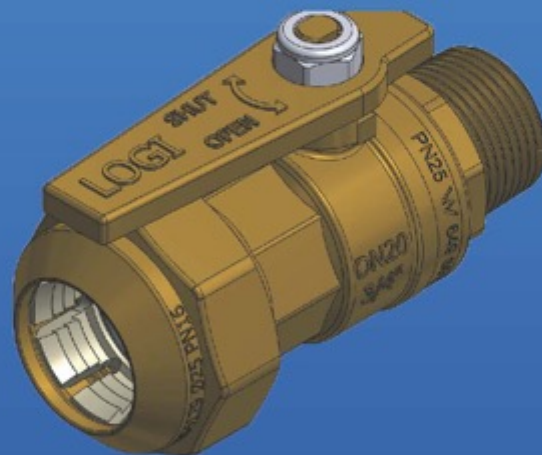
Series

Specifications

- Working temperature -20°C tpo 60°C
- Max. pressure rating 2500 kPa

Features

- DR Brass handle
- Watermark approved
- Full bore
- 100% pressure tested



Austworld
PO Box 311
Ashmore City
QLD 4214

P: 1300 780 430
F: 1300 780 441
E: info@austworld.com.au
W: www.austworld.com.au

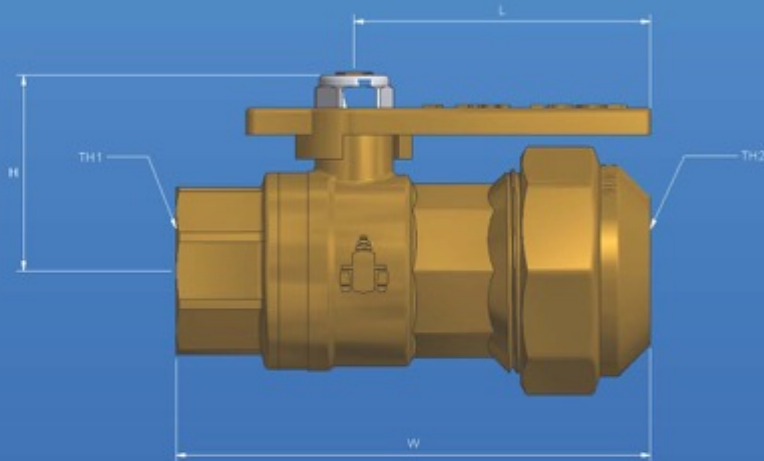


ATTENTION: AS PART OF AUSTWORLD'S COMMITMENT TO QUALITY PRODUCTS, AUSTWORLD RESERVES THE RIGHT TO ALTER THE DESIGN OR SPECIFICATION OF ITS PRODUCT WITHOUT NOTICE.

Ver 1.0



BALL VALVE WATERMARKED. POLY TO MALE



Material Chart

Part	Material
Body	DR Brass
Body Nut	DR Brass
Spindle	SS 316
Ball	SS 316
Seal	PTFE
O Ring	Viton
Handle	DR Brass
Retaining Ring	POM
Pipe Seal	EDPM
Handle Nut	SS 316

Sizing Chart MM

	L	H	W	TH1	TH2
WPE 2025M	55	36	94	R 3/4"	25PE
WPE 2532M	55	40	107	R 1"	32PE



Austworld
PO Box 311
Ashmore City
QLD 4214

P: 1300 780 430
F: 1300 780 441
E: info@austworld.com.au
W: www.austworld.com.au



ATTENTION: AS PART OF AUSTWORLD'S COMMITMENT TO QUALITY PRODUCTS, AUSTWORLD RESERVES THE RIGHT TO ALTER THE DESIGN OR SPECIFICATION OF ITS PRODUCT WITHOUT NOTICE.

Ver 1.0



BALL VALVE WATER MARKED RIGHT ANGLE METER STOP F X G

WRA

Series

Specifications

- Working temperature -20°C tpo 120°C
- Max. pressure rating 2500 kPa

Features

- DR Brass handle
- Water mark approved
- Full bore
- 100% pressure tested
- Lockable both on and off
- WSAA Appraised



Austworld
PO Box 311
Ashmore City
QLD 4214

P: 1300 780 430
F: 1300 780 441
E: info@austworld.com.au
W: www.austworld.com.au

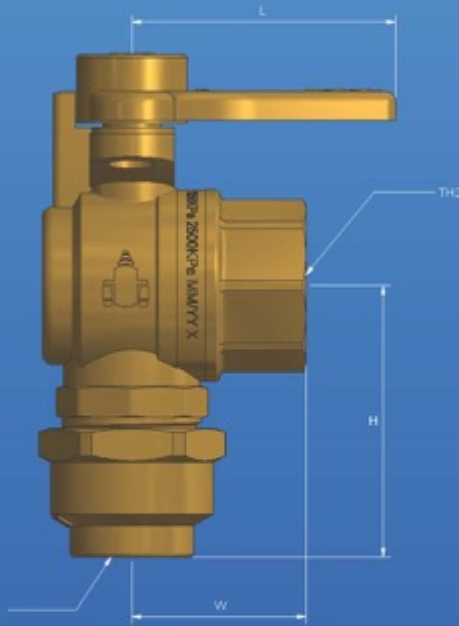


ATTENTION: AS PART OF AUSTWORLD COMMITMENT TO QUALITY PRODUCTS, AUSTWORLD RESERVES THE RIGHT TO ALTER THE DESIGN OR SPECIFICATION OF ITS PRODUCT WITHOUT NOTICE.

Ver 1.0



BALL VALVE WATER MARKED RIGHT ANGLE METER STOP F X C



Sizing Chart MM

	H	W	L	TH1	TH2
WRA20	52	33	50	Rp 3/4"	20C
WRA25	59	41	56	Rp 1"	20C

Material Chart

Part	Material
Body	DR Brass
Body Cap	DR Brass
Seal	PTFE
Ball	SS316
Handle	DR Brass
Retaining Ring	PA
O Ring	FFKM (Viton)
Compression Nut	DR Brass



Austworld
 PO Box 311
 Ashmore City
 QLD 4214

P: 1300 780 430
 F: 1300 780 441
 E: info@austworld.com.au
 W: www.austworld.com.au



ATTENTION: AS PART OF AUSTWORLD'S COMMITMENT TO QUALITY PRODUCTS, AUSTWORLD RESERVES THE RIGHT TO ALTER THE DESIGN OR SPECIFICATION OF ITS PRODUCT WITHOUT NOTICE.

Ver 1.0



BALL VALVE WATERMARKED RIGHT ANGLE METER STOP F X F WHEEL HANDLE

WRAFWA

Series

Specifications

- Working temperature 0°C to 90°C
- Max. pressure rating 2500kPa

Features

- DZR Brass
- Watermark approved
- 316 Stainless Steel Ball and Spindle
- 100% pressure tested



Austworld
PO Box 311
Ashmore City
QLD 4214

P: 1300 780 430
F: 1300 780 441
E: info@austworld.com.au
W: www.austworld.com.au

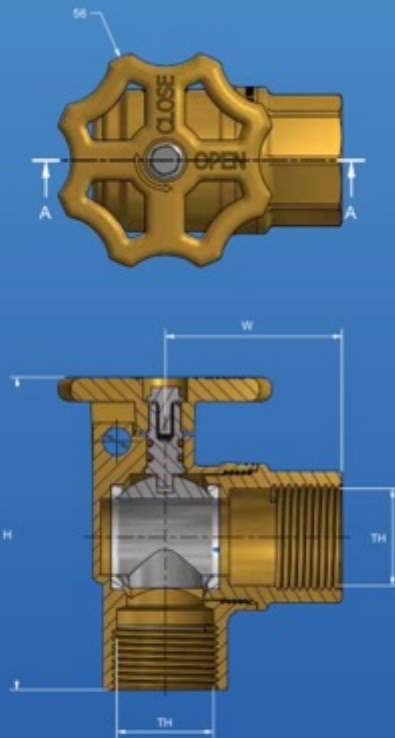


DISCLAIMER: AUSTWORLD IS COMMITTED TO QUALITY PRODUCTS. AUSTWORLD RESERVES THE RIGHT TO ALTER THE DESIGN OR SPECIFICATION OF ITS PRODUCT WITHOUT NOTICE. THE PRODUCT IMAGES SHOWN ARE FOR ILLUSTRATION PURPOSES ONLY AND MAY NOT BE AN EXACT REPRESENTATION OF THE PRODUCT.

Ver 1.0



BALL VALVE WATERMARKED RIGHT ANGLE METER STOP FXF WHEEL HANDLE



Sizing Chart MM

	H	L	TH
WRA20FWA	78	44	Rp 3/4"
WRA25FWA	99	58	Rp 1"



Austworld
PO Box 311
Ashmore City
QLD 4214

P: 1300 780 430
F: 1300 780 441
E: info@austworld.com.au
W: www.austworld.com.au





BALL VALVE WATER MARKED RIGHT ANGLE METER STOP FI X FI

WRAF

Series

Specifications

- Working temperature -20°C to 120°C
- Max. pressure rating 2500 kPa

Features

- DR Brass handle
- Water mark approved
- Full bore
- 100% pressure tested
- Lockable both on and off
- WSAA Appraised



Austworld
PO Box 311
Ashmore City
QLD 4214

P: 1300 780 430
F: 1300 780 441
E: info@austworld.com.au
W: www.austworld.com.au

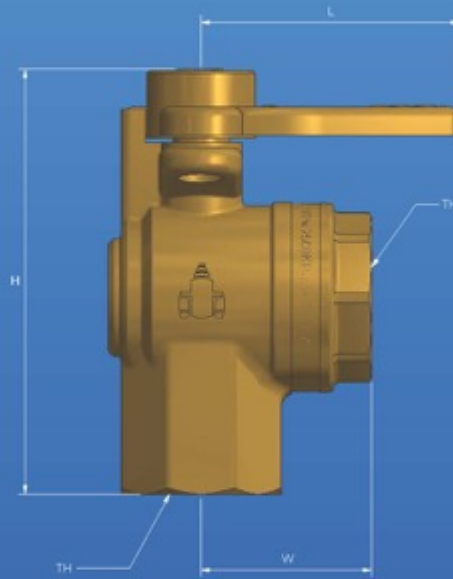


ATTENTION: AS PART OF AUSTWORLD COMMITMENT TO QUALITY PRODUCTS, AUSTWORLD RESERVES THE RIGHT TO ALTER THE DESIGN OR SPECIFICATION OF ITS PRODUCT WITHOUT NOTICE.

Ver 1.0



BALL VALVE WATER MARKED RIGHT ANGLE METER STOP FI X FI



Sizing Chart MM

	H	W	L	TH
WRA20F	82	33	50	Rp 3/4"
WRA25F	92	40	56	Rp 1"

Material Chart

Part	Material
Body	DR Brass
Body Cap	DR Brass
Seal	PTFE
Ball	SS316
Handle	DR Brass
Retaining Ring	PA
O Ring	FKM [Viton]



Austworld
PO Box 311
Ashmore City
QLD 4214

P: 1300 780 430
F: 1300 780 441
E: info@austworld.com.au
W: www.austworld.com.au



ATTENTION: AS PART OF AUSTWORLD'S COMMITMENT TO QUALITY PRODUCTS, AUSTWORLD RESERVES THE RIGHT TO ALTER THE DESIGN OR SPECIFICATION OF ITS PRODUCT WITHOUT NOTICE.

Ver 1.0



BALL VALVE WATER MARKED RIGHT ANGLE METER STOP 20FI X 20MI

WRA20M

Specifications

- Working temperature -20°C tpo 120°C
- Max. pressure rating 2500KPA

Features

- DR Brass handle
- Water mark approved
- Full bore
- 100% pressure tested



Austworld
PO Box 311
Ashmore City
QLD 4214

P: 1300 780 430
F: 1300 780 441
E: info@austworld.com.au
W: www.austworld.com.au

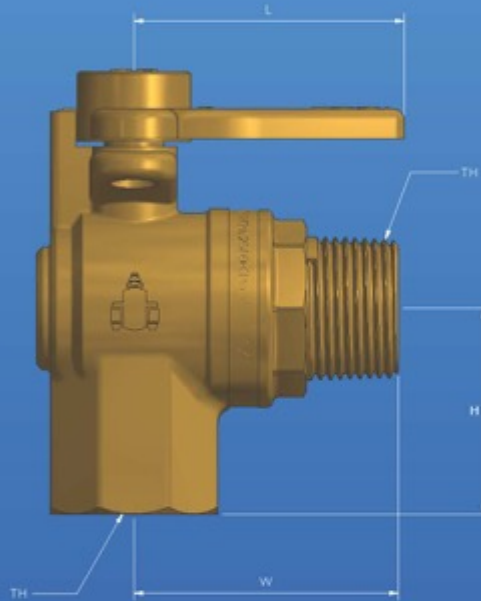


ATTENTION: AS PART OF AUSTWORLD'S COMMITMENT TO QUALITY PRODUCTS, AUSTWORLD RESERVES THE RIGHT TO ALTER THE DESIGN OR SPECIFICATION OF ITS PRODUCT WITHOUT NOTICE.

Ver 1.0



BALL VALVE WATER MARKED RIGHT ANGLE METER STOP 20FI X 20MI



Material Chart

Part	Material
Body	DR Brass
Body Cap	DR Brass
Seal	PTFE
Ball	SS316
Handle	DR Brass
Retaining Ring	PA
O Ring	Viton

Sizing Chart MM

	H	L	W	TH
WRA20M	39	50	49	R3/4"



Austworld
PO Box 311
Ashmore City
QLD 4214

P: 1300 780 430
F: 1300 780 441
E: info@austworld.com.au
W: www.austworld.com.au



ATTENTION: AS PART OF AUSTWORLD'S COMMITMENT TO QUALITY PRODUCTS, AUSTWORLD RESERVES THE RIGHT TO ALTER THE DESIGN OR SPECIFICATION OF ITS PRODUCT WITHOUT NOTICE.

Ver 1.0



BALL VALVE WATER MARKED RIGHT ANGLE METER STOP 20MI X 20FI

WRA20MF

Specifications

- Working temperature -20°C tpo 120°C
- Max. pressure rating 2500KPA

Features

- DR Brass handle
- Water mark approved
- Full bore
- 100% pressure tested



Austworld
PO Box 311
Ashmore City
QLD 4214

P: 1300 780 430
F: 1300 780 441
E: info@austworld.com.au
W: www.austworld.com.au

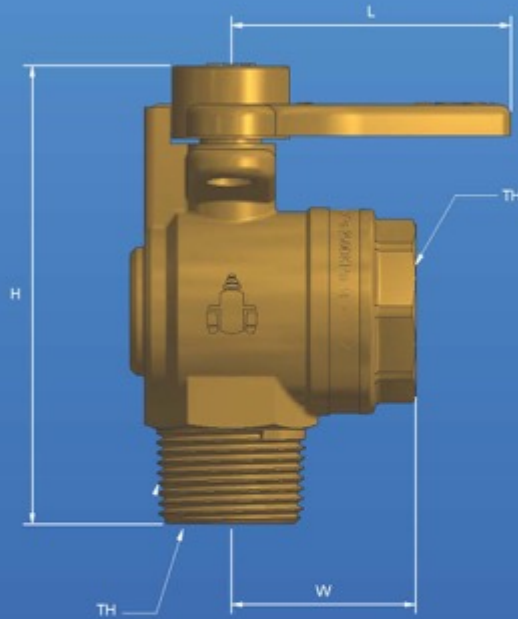


ATTENTION: AS PART OF AUSTWORLD COMMITMENT TO QUALITY PRODUCTS, AUSTWORLD RESERVES THE RIGHT TO ALTER THE DESIGN OR SPECIFICATION OF ITS PRODUCT WITHOUT NOTICE.

Ver 1.0



BALL VALVE WATER MARKED RIGHT ANGLE METER STOP 20MI X 20FI



Sizing Chart MM

	H	L	W	TH
WRA20MF	82	50	33	R3/4"

Material Chart

Part	Material
Body	DR Brass
Body Cap	DR Brass
Seal	PTFE
Ball	SS316
Handle	DR Brass
Retaining Ring	PA
O Ring	FKM [viton]



Austworld
PO Box 311
Ashmore City
QLD 4214

P: 1300 780 430
F: 1300 780 441
E: info@austworld.com.au
W: www.austworld.com.au



ATTENTION: AS PART OF AUSTWORLD'S COMMITMENT TO QUALITY PRODUCTS, AUSTWORLD RESERVES THE RIGHT TO ALTER THE DESIGN OR SPECIFICATION OF ITS PRODUCT WITHOUT NOTICE.

Ver 1.0



BALL VALVE WATERMARKED. TELESCOPIC FEMALE

WBEBL

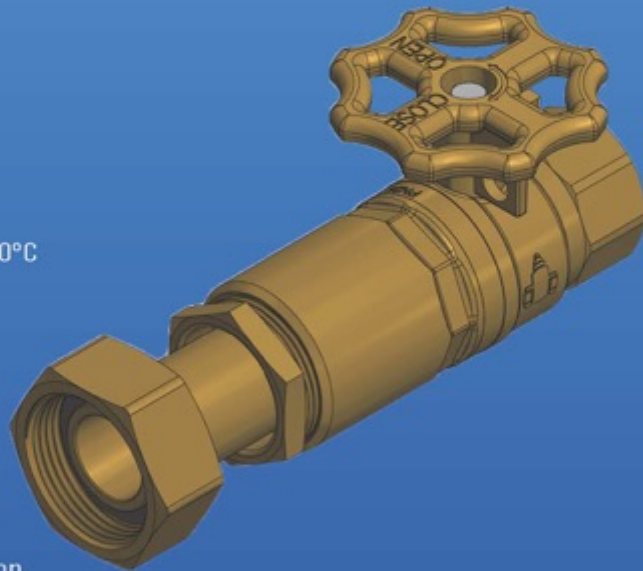
Series

Specifications

- Working temperature -20°C tpo 100°C
- Max. pressure rating 2500 kPa

Features

- DR Brass handle
- Watermark approved
- Full bore
- 100% pressure tested
- Telescopic Arm for easier installation
- Swivel Nut
- WSAA Appraised
- 100% pressure tested



Austworld
PO Box 311
Ashmore City
QLD 4214

P: 1300 780 430
F: 1300 780 441
E: info@austworld.com.au
W: www.austworld.com.au

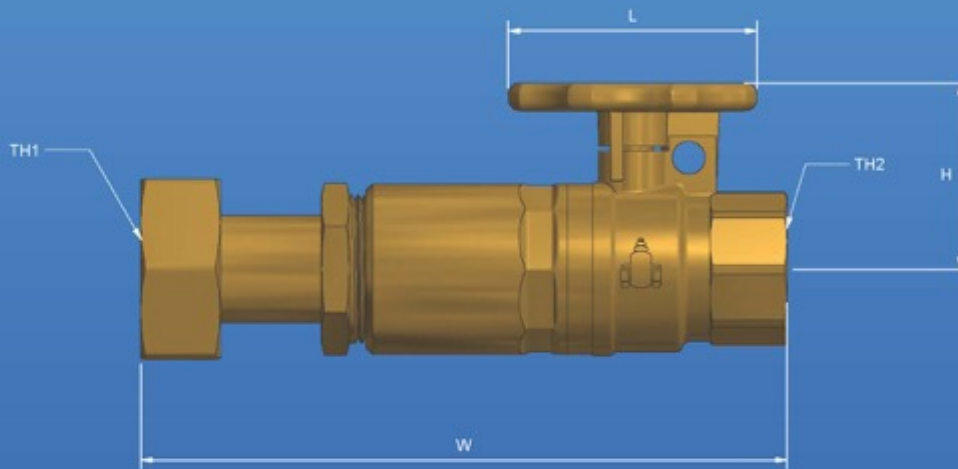


ATTENTION: AS PART OF AUSTWORLD'S COMMITMENT TO QUALITY PRODUCTS, AUSTWORLD RESERVES THE RIGHT TO ALTER THE DESIGN OR SPECIFICATION OF ITS PRODUCT WITHOUT NOTICE.

Ver 1.0



BALL VALVE WATERMARKED. TELESCOPIC FEMALE



Material Chart

Part	Material
Body	DR Brass
Body Nut	DR Brass
Spindle	SS 316
Ball	SS 316
Seal	PTFE
O Ring	Viton
Handle	DR Brass
Locking Nut	Dr Brass
Locking Gland	POM
Handle Nut	SS 316
Telescopic Arm	Dr Brass
Swivel Nut	Dr Brass

Sizing Chart MM

	L	H	W	TH1	TH2
WB20EBL	53	40	123-138	MTHD 3/4"	Rp 3/4"
WB25EBL	53	44	136-151	MTHD 1"	Rp 1"



Austworld
PO Box 311
Ashmore City
QLD 4214

P: 1300 780 430
F: 1300 780 441
E: info@austworld.com.au
W: www.austworld.com.au



ATTENTION: AS PART OF AUSTWORLD'S COMMITMENT TO QUALITY PRODUCTS, AUSTWORLD RESERVES THE RIGHT TO ALTER THE DESIGN OR SPECIFICATION OF ITS PRODUCT WITHOUT NOTICE.

Ver 1.0



BALL VALVE WATERMARKED TELESCOPIC PRESS FIT TO FEMALE

WRWPE

Series

Specifications

- Working temperature -20°C tpo 100°C
- Max. pressure rating 2500 kPa

Features

- DR Brass handle
- Watermark approved
- Full bore
- 100% pressure tested
- Telescopic Arm
- Swivel Nut
- WSAA Appraised
- Press Fit connection
- 100% pressure tested



Austworld
PO Box 311
Ashmore City
QLD 4214

P: 1300 780 430
F: 1300 780 441
E: info@austworld.com.au
W: www.austworld.com.au

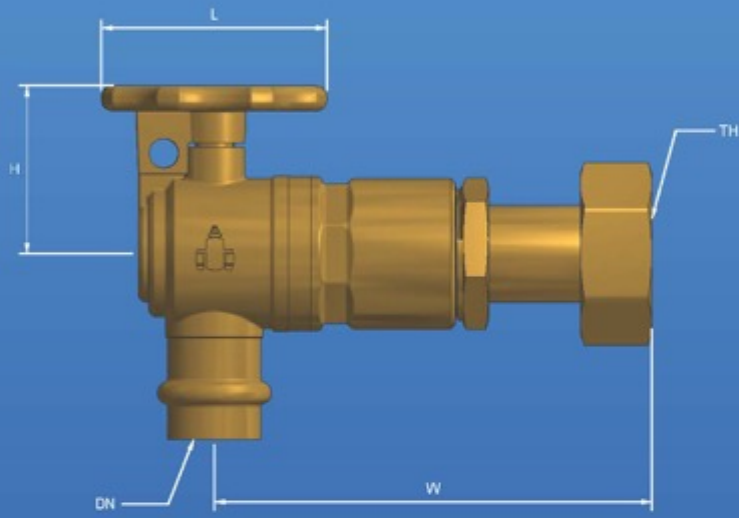


ATTENTION: AS PART OF AUSTWORLD'S COMMITMENT TO QUALITY PRODUCTS, AUSTWORLD RESERVES THE RIGHT TO ALTER THE DESIGN OR SPECIFICATION OF ITS PRODUCT WITHOUT NOTICE.

Ver 1.0



BALL VALVE WATERMARKED TELESCOPIC PRESS FIT TO FEMALE



Sizing Chart MM

	L	H	W	TH	DN
WRWPE20	53	40	90-105	MTHD 3/4"	DN20
WRWPE25	53	44	96-111	MTHD 1"	DN25

Material Chart

Part	Material
Body	DR Brass
Body Nut	DR Brass
Spindle	SS 316
Ball	SS 316
Seal	PTFE
O Ring	Viton
Handle	DR Brass
Locking Nut	Dr Brass
Locking Gland	PGM
Handle Nut	SS 316
Telescopic Arm	Dr Brass
Swivel Nut	Dr Brass
Inlet O ring	Viton

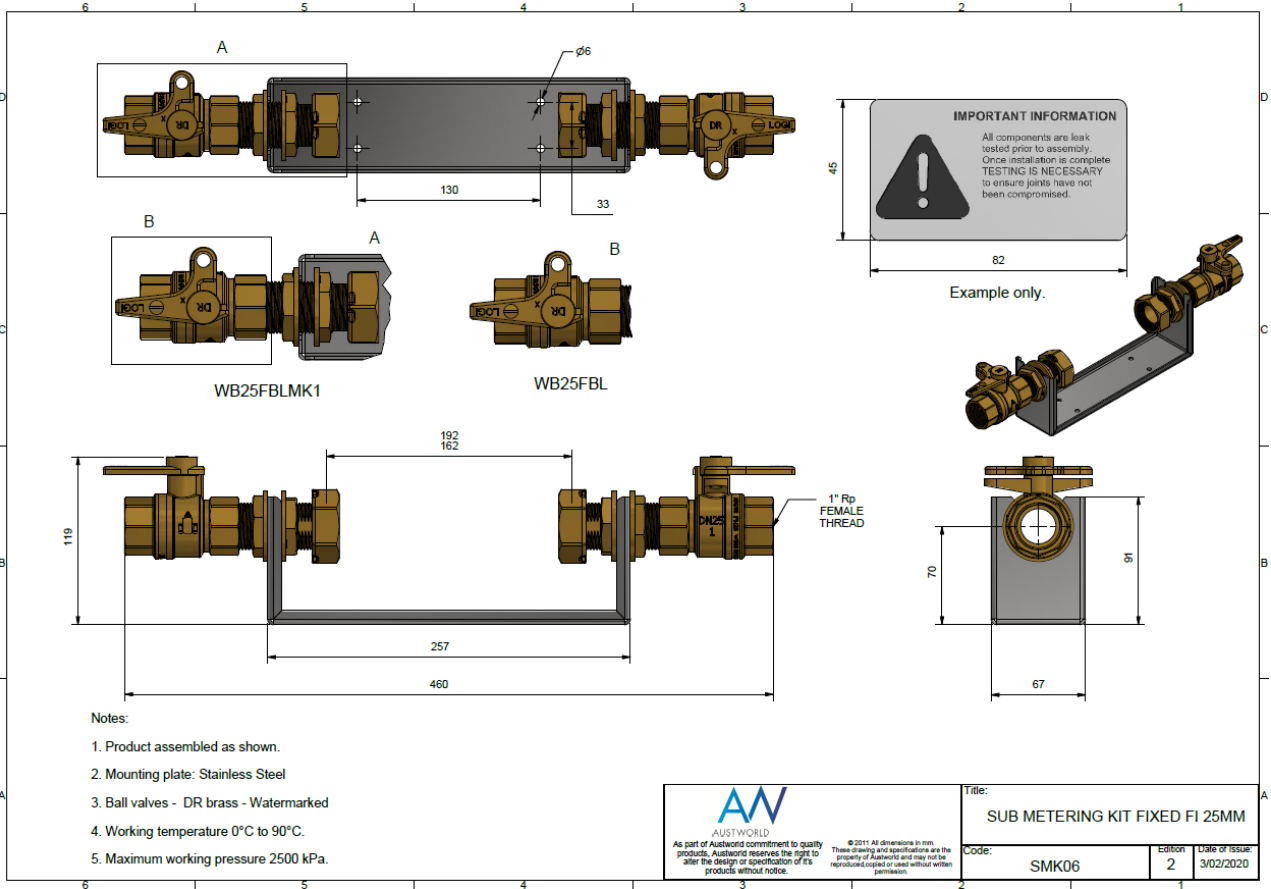
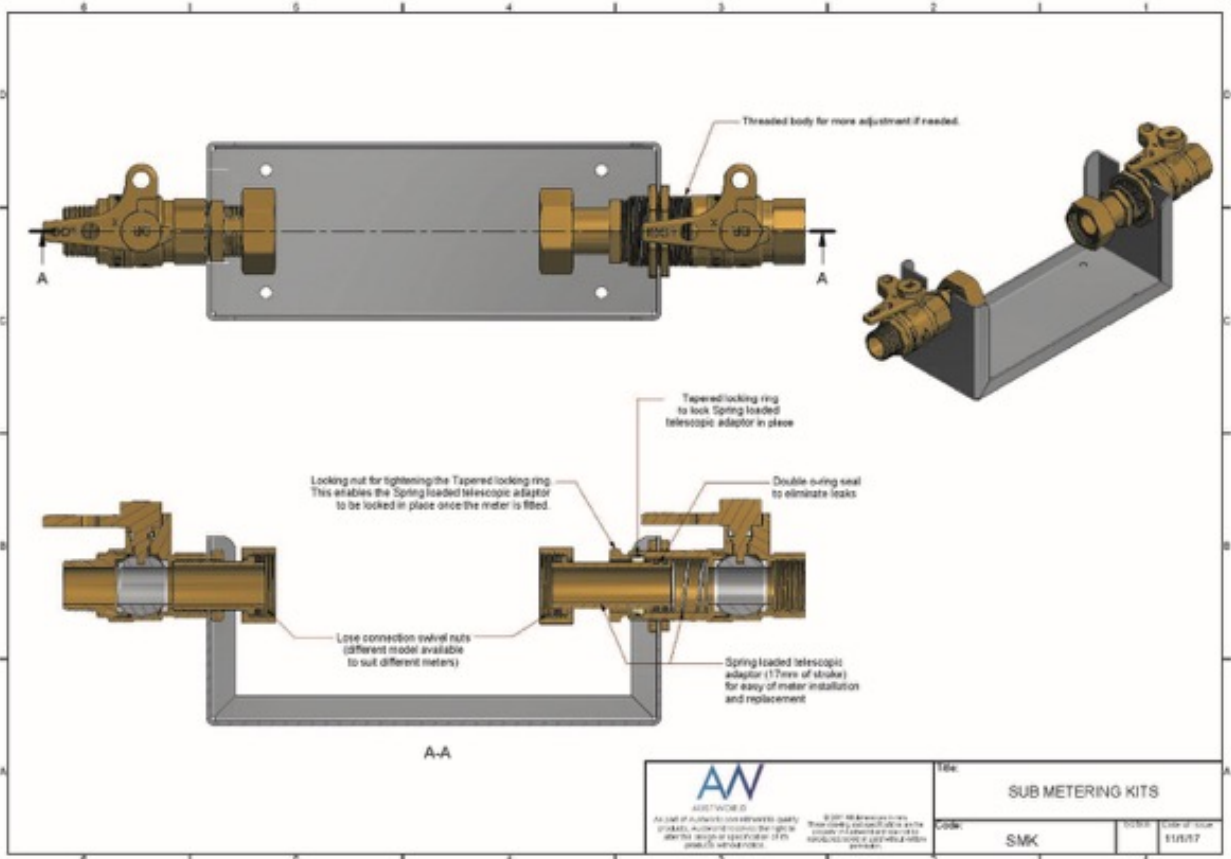


Austworld
 PO Box 311
 Ashmore City
 QLD 4214
 P: 1300 780 430
 F: 1300 780 441
 E: info@austworld.com.au
 W: www.austworld.com.au



ATTENTION: AS PART OF AUSTWORLD'S COMMITMENT TO QUALITY PRODUCTS, AUSTWORLD RESERVES THE RIGHT TO ALTER THE DESIGN OR SPECIFICATION OF ITS PRODUCT WITHOUT NOTICE.

Ver 1.0



- Notes:
1. Product assembled as shown.
 2. Mounting plate: Stainless Steel
 3. Ball valves - DR brass - Watermarked
 4. Working temperature 0°C to 90°C.
 5. Maximum working pressure 2500 kPa.

APPENDIX B - QUALITY CERTIFICATIONS

Copies of the following Quality Certification Certificates are available for downloading from the WSAA members website.

TABLE B1 LOGI DEZIGN – PRODUCT CERTIFICATION

15 Activity Crescent Molendinar Qld 4214	
Product Standard/Spec.	AS 4796:2016
Certificate No.	3020
Issuing certification body	Australian Certification Services Pty Ltd
First date of certification	6 January 2020
Current date of certification	28 February 2020
Expiry date of certification	5 January 2025



PRODUCT CONFORMITY SCHEME – FULL CERTIFICATION

Certification Licence

Australian Certification Services Pty Ltd grants to:

Logi Dezign

Trading as Logi Dezign

the right to use the Certification Mark as shown above in conjunction with the Certificate No. on product/s as identified in the Schedule and as listed on the Australian Certification Services Website www.certificationservices.com.au and have been shown to comply with the relevant Standard/s referred to below. The Licensee is granted a licence to use the Certification Mark subject to the rules governing the use.

Product Type: Ball Valves
 Brand: LOGI VALVE
 Evaluated to: AS 4796:2016 Water supply—Metal-bodied and plastic bodied ball valves for property service connection

Issue Date: 23rd October 2020
 Initial Issue Date: 6th January 2020
 Expiry Date: 5th January 2025

Paul Greig
 General Manager

Certificate No.: 3020

This certificate remains the property of Australian Certification Services Pty Ltd

The Product Conformity Scheme (PCS) – Full Certification is a conformity assessment scheme based on ISO/IEC 17067 (Scheme Type 5) and SA HB 18.28





Product Conformity Scheme (PCS)-FULL Certification Licence Schedule

Certificate Holder	Logi Dezn 15 Activity Crescent, Molendinar Qld 4214 Australia Website: www.austworld.com.au
Certificate Number	3020
Certification Standard/s:	AS 4796:2016 Water supply—Metal-bodied and plastic bodied ball valves for property service connection

Product Listing

Model Identification	Brand Name	Product Description
RWB20MBWA	LOGI VALVE	DN20 PN25 Copper Alloy (DR Brass) Ball Valve (Stainless Steel #316 Ball) with Wheel Handle Male x Female Threaded Ends Lilac
RWB25MBWA	LOGI VALVE	DN25 PN25 Copper Alloy (DR Brass) Ball Valve (Stainless Steel #316 Ball) with Wheel Handle Male x Female Threaded Ends Lilac
RWRA20	LOGI VALVE	DN20 PN25 Copper Alloy (DR Brass) Right Angle Ball Valve (Stainless Steel #316 Ball) with Lever Handle Compression x Female Threaded Ends Lilac
RWRA20F	LOGI VALVE	DN20 PN25 Copper Alloy (DR Brass) Right Angle Ball Valve (Stainless Steel #316 Ball) with Lever Handle Female Threaded Ends Lilac
RWRA20FWA	LOGI VALVE	DN20 PN25 Copper Alloy (DR Brass) Ball Valve (Stainless Steel #316 Ball) with Wheel Handle Female Threaded Ends Lilac
RWRA20M	LOGI VALVE	DN20 PN25 Copper Alloy (DR Brass) Right Angle Ball Valve (Stainless Steel #316 Ball) with Lever Handle Female Threaded Ends Lilac
RWRA25	LOGI VALVE	DN25 PN25 Copper Alloy (DR Brass) Right Angle Ball Valve (Stainless Steel #316 Ball) with Lever Handle Female Threaded x Compression Ends Lilac
RWRA25F	LOGI VALVE	DN25 PN25 Copper Alloy (DR Brass) Right Angle Ball Valve (Stainless Steel #316 Ball) with Lever Handle Female Threaded Ends Lilac
RWRA25FWA	LOGI VALVE	DN25 PN25 Copper Alloy (DR Brass) Ball Valve (Stainless Steel #316 Ball) with Wheel Handle Female Threaded Ends Lilac



Model Identification	Brand Name	Product Description
RWWB20MB	LOGI VALVE	DN20 PN25 Copper Alloy (DR Brass) Ball Valve (Stainless Steel #316 Ball) with Lever Handle Male x Female Threaded Ends Lilac
RWWB25MB	LOGI VALVE	DN25 PN25 Copper Alloy (DR Brass) Ball Valve (Stainless Steel #316 Ball) with Lever Handle Male x Female Threaded Ends Lilac
RWWB25MG	LOGI VALVE	DN25 PN25 Copper Alloy (DR Brass) Ball Valve (Stainless Steel #316 Ball) with Lever Handle Male x Female Threaded Ends Lilac
W15FSS	LOGI VALVE	DN15 PN25 Copper Alloy (DR Brass) Ball Valve (Stainless Steel #316 Ball) with Lever Handle Female Threaded Ends
W15FSSL	LOGI VALVE	DN15 PN25 Copper Alloy (DR Brass) Ball Valve (Stainless Steel #316 Ball) with Lever Handle Female Threaded Ends Lilac
W20FSS	LOGI VALVE	DN20 PN25 Copper Alloy (DR Brass) Ball Valve (Stainless Steel #316 Ball) with Lever Handle Female Threaded Ends
W20FSSL	LOGI VALVE	DN20 PN25 Copper Alloy (DR Brass) Ball Valve (Stainless Steel #316 Ball) with Lever Handle Female Threaded Ends Lilac
W25FSS	LOGI VALVE	DN25 PN25 Copper Alloy (DR Brass) Ball Valve (Stainless Steel #316 Ball) Lever Handle Female Threaded Ends
W25FSSL	LOGI VALVE	DN25 PN25 Copper Alloy (DR Brass) Ball Valve (Stainless Steel #316 Ball) with Lever Handle Female Threaded Ends Lilac
W32FSS	LOGI VALVE	DN32 PN25 Copper Alloy (DR Brass) Ball Valve (Stainless Steel #316 Ball) Lever Handle Female Threaded Ends
W32FSSL	LOGI VALVE	DN32 PN25 Copper Alloy (DR Brass) Ball Valve (Stainless Steel #316 Ball) with Lever Handle Female Threaded Ends Lilac
W40FSS	LOGI VALVE	DN40 PN25 Copper Alloy (DR Brass) Ball Valve (Stainless Steel #316 Ball) Lever Handle Female Threaded Ends
W40FSSL	LOGI VALVE	DN40 PN25 Copper Alloy (DR Brass) Ball Valve (Stainless Steel #316 Ball) with Lever Handle Female Threaded Ends Lilac
W50FSS	LOGI VALVE	DN50 PN25 Copper Alloy (DR Brass) Ball Valve (Stainless Steel #316 Ball) Lever Handle Female Threaded Ends



Model Identification	Brand Name	Product Description
W50FSSL	LOGI VALVE	DN50 PN25 Copper Alloy (DR Brass) Ball Valve (Stainless Steel #316 Ball) with Lever Handle Female Threaded Ends Lilac
WB20EBL	LOGI VALVE	DN20 PN25 Copper Alloy (DR Brass) Ball Valve (Stainless Steel #316 Ball) with Extendable Lockable Wheel Handle Female Threaded x Loose Nut Ends
WB20FB	LOGI VALVE	DN20 PN25 Copper Alloy (DR Brass) Right Angle Ball Valve (Stainless Steel #316 Ball) Lever Handle Female Threaded Ends
WB20FBL	LOGI VALVE	DN20 PN25 Copper Alloy (DR Brass) Right Angle Ball Valve (Stainless Steel #316 Ball) Lever Handle Female Threaded Ends
WB20FBLH	LOGI VALVE	DN20 PN25 Copper Alloy (DR Brass) Right Angle Ball Valve (Stainless Steel #316 Ball) Lever Lockable Handle (Long) Female Threaded Ends
WB20FBLMK3	LOGI VALVE	DN20 PN25 Copper Alloy (DR Brass) Right Angle Ball Valve (Stainless Steel #316 Ball) Lever Lockable Handle Female Threaded x Loose Nut Ends Meter Kit
WB20FBLT	LOGI VALVE	DN20 PN25 Copper Alloy (DR Brass) Ball Valve (Stainless Steel #316 Ball) Extendable Lockable Lever Handle Female Threaded x Loose Nut Ends
WB20FBLTNSW	LOGI VALVE	DN20 PN25 Copper Alloy (DR Brass) Ball Valve (Stainless Steel #316 Ball) Extendable Lockable Lever Handle Female Threaded x Loose Nut Ends
WB20FBWA	LOGI VALVE	DN20 PN25 Copper Alloy (DR Brass) Ball Valve (Stainless Steel #316 Ball) with Wheel Handle Female Threaded Ends
WB20MB	LOGI VALVE	DN20 PN25 Copper Alloy (DR Brass) Ball Valve (Stainless Steel #316 Ball) with Butterfly Handle Male x Female Threaded Ends
WB20MBL	LOGI VALVE	DN20 PN25 Copper Alloy (DR Brass) Ball Valve (Stainless Steel #316 Ball) with Butterfly Handle Male x Female Threaded Ends
WB20MBLH	LOGI VALVE	DN20 PN25 Copper Alloy (DR Brass) Ball Valve (Stainless Steel #316 Ball) with Lever Lockable Handle (Long) Male x Female Threaded Ends



Model Identification	Brand Name	Product Description
WB20MBLMK1	LOGI VALVE	DN20 PN25 Copper Alloy (DR Brass) Ball Valve (Stainless Steel #316 Ball) Lockable Lever Handle Meter Stop Loose Nut x Male Threaded Ends
WB20MBLMK2	LOGI VALVE	DN20 PN25 Copper Alloy (DR Brass) Ball Valve (Stainless Steel #316 Ball) Lockable Lever Handle Meter Stop Loose Nut x Male Threaded Ends NSW
WB20MBWA	LOGI VALVE	DN20 PN25 Copper Alloy (DR Brass) Ball Valve (Stainless Steel #316 Ball) with Wheel Handle Male x Female Threaded Ends
WB25EBL	LOGI VALVE	DN25 PN25 Copper Alloy (DR Brass) Ball Valve (Stainless Steel #316 Ball) with Extendable Lockable Wheel Handle Female Threaded x Loose Nut Ends
WB25FB	LOGI VALVE	DN25 PN25 Copper Alloy (DR Brass) Right Angle Ball Valve (Stainless Steel #316 Ball) Lever Handle Female Threaded Ends
WB25FBL	LOGI VALVE	DN25 PN25 Copper Alloy (DR Brass) Ball Valve (Stainless Steel #316 Ball) Lever Handle Female Threaded Ends
WB25FBLMK1	LOGI VALVE	DN25 PN25 Copper Alloy (DR Brass) Right Angle Ball Valve (Stainless Steel #316 Ball) Lever Lockable Handle Female Threaded x Loose Nut Ends Meter Kit
WB25MB	LOGI VALVE	DN25 PN25 Copper Alloy (DR Brass) Ball Valve (Stainless Steel #316 Ball) with Butterfly Handle Male x Female Threaded Ends
WB25MBL	LOGI VALVE	DN25 PN25 Copper Alloy (DR Brass) Ball Valve (Stainless Steel #316 Ball) with Lever Handle Male x Female Threaded Ends
WB25MBWA	LOGI VALVE	DN25 PN25 Copper Alloy (DR Brass) Ball Valve (Stainless Steel #316 Ball) with Wheel Handle Male x Female Threaded Ends
WP20FBWA	LOGI VALVE	DN20 PN25 Copper Alloy (DR Brass) Ball Valve (Stainless Steel #316 Ball) with Wheel Handle with Female Threaded End x Press Fit End
WPE2025F	LOGI VALVE	DN25x 20 PN25 Copper Alloy (DR Brass) Ball Valve (Stainless Steel #316 Ball) with Lever Handle PE x Female Threaded Ends
WPE2025FL	LOGI VALVE	DN25x 20 PN25 Copper Alloy (DR Brass) Ball Valve (Stainless Steel #316 Ball) with Lever Handle Lockable PE x Female Threaded Ends



Model Identification	Brand Name	Product Description
WPE2025FP	LOGI VALVE	DN25x 20 PN25 Copper Alloy (DR Brass) Ball Valve (Stainless Steel #316 Ball) with Lever Handle PE x Female Threaded Ends with Plug
WPE2025FRW	LOGI VALVE	DN25x 20 PN25 Copper Alloy (DR Brass) Ball Valve (Stainless Steel #316 Ball) with Lever Handle PE x Female Threaded Ends Lilac
WPE2025FRWP	LOGI VALVE	DN25x 20 PN25 Copper Alloy (DR Brass) Ball Valve (Stainless Steel #316 Ball) with Lever Handle PE x Female Threaded Ends Lilac with Plug
WPE2025M	LOGI VALVE	DN25x20 PN25 Copper Alloy (DR Brass) Ball Valve (Stainless Steel #316 Ball) with Lever Handle PE x Male Threaded Ends
WPE2025ML	LOGI VALVE	DN25x 20 PN25 Copper Alloy (DR Brass) Ball Valve (Stainless Steel #316 Ball) with Lever Handle Lockable PE x Female Threaded Ends
WPE2025MRW	LOGI VALVE	DN25x20 PN25 Copper Alloy (DR Brass) Ball Valve (Stainless Steel #316 Ball) with Lever Handle Male Threaded x PE End Lilac
WPE2025MRWA	LOGI VALVE	DN25x20 PN25 Copper Alloy (DR Brass) Ball Valve (Stainless Steel #316 Ball) with Wheel Handle Male Threaded x PE End Lilac
WPE2025MWA	LOGI VALVE	DN25x20 PN25 Copper Alloy (DR Brass) Ball Valve (Stainless Steel #316 Ball) with Wheel Handle Male Threaded x PE End
WPE2025SM	LOGI VALVE	DN25x20 PN25 Copper Alloy (DR Brass) Ball Valve (Stainless Steel #316 Ball) with Lever Handle PE x Loose Nut Female Threaded Ends
WPE2532F	LOGI VALVE	DN32x 25 PN25 Copper Alloy (DR Brass) Ball Valve (Stainless Steel #316 Ball) with Lever Handle PE x Female Threaded Ends
WPE2532FL	LOGI VALVE	DN32x 25 PN25 Copper Alloy (DR Brass) Ball Valve (Stainless Steel #316 Ball) with Lever Handle Lockable PE x Female Threaded Ends
WPE2532FRW	LOGI VALVE	DN32x 25 PN25 Copper Alloy (DR Brass) Ball Valve (Stainless Steel #316 Ball) with Lever Handle PE x Female Threaded Ends Lilac
WPE2532M	LOGI VALVE	DN32x25 PN25 Copper Alloy (DR Brass) Ball Valve (Stainless Steel #316 Ball) with Lever Handle PE x Male Threaded Ends
WPE2532ML	LOGI VALVE	DN32x25 PN25 Copper Alloy (DR Brass) Ball Valve (Stainless Steel #316 Ball) with Lever Handle Lockable PE x Male Threaded Ends



Model Identification	Brand Name	Product Description
WPE2532MRW	LOGI VALVE	DN32x25 PN25 Copper Alloy (DR Brass) Ball Valve (Stainless Steel #316 Ball) with Lever Handle PE x Male Threaded End Lilac
WPE2532MRWA	LOGI VALVE	DN32x25 PN25 Copper Alloy (DR Brass) Ball Valve (Stainless Steel #316 Ball) with Wheel Handle PE x Male Threaded End Lilac
WPE2532MWA	LOGI VALVE	DN32x25 PN25 Copper Alloy (DR Brass) Ball Valve (Stainless Steel #316 Ball) with Wheel Handle PE x Male Threaded End
WPE2532SM	LOGI VALVE	DN32x25 PN25 Copper Alloy (DR Brass) Ball Valve (Stainless Steel #316 Ball) with Lever Handle PE x Loose Nut Female Threaded Ends
WRA20	LOGI VALVE	DN20 PN25 Copper Alloy (DR Brass) Right Angle Ball Valve (Stainless Steel #316 Ball) Lever Handle Female Threaded x Compression Ends
WRA20C	LOGI VALVE	DN20 PN25 Copper Alloy (DR Brass) Right Angle Ball Valve (Stainless Steel #316 Ball) Lever Handle Compression Ends
WRA20F	LOGI VALVE	DN20 PN25 Copper Alloy (DR Brass) Right Angle Ball Valve (Stainless Steel #316 Ball) Lever Handle Female Threaded Ends
WRA20FSW	LOGI VALVE	DN20 PN25 Copper Alloy (DR Brass) Right Angle Ball Valve (Stainless Steel #316 Ball) Lever Handle Female Threaded x Female Union
WRA20FWA	LOGI VALVE	DN20 PN25 Copper Alloy (DR Brass) Right Angle Ball Valve (Stainless Steel #316 Ball) Wheel Handle Female Threaded Ends
WRA20M	LOGI VALVE	DN20 PN25 Copper Alloy (DR Brass) Right Angle Ball Valve (Stainless Steel #316 Ball) Lever Handle Female x Male Threaded Ends
WRA20MF	LOGI VALVE	DN20 PN25 Copper Alloy (DR Brass) Right Angle Ball Valve (Stainless Steel #316 Ball) Lever Handle Male x Female Threaded Ends
WRA25	LOGI VALVE	DN25 PN25 Copper Alloy (DR Brass) Right Angle Ball Valve (Stainless Steel #316 Ball) Lever Handle Female Threaded x Compression Ends
WRA25F	LOGI VALVE	DN25 PN25 Copper Alloy (DR Brass) Right Angle Ball Valve (Stainless Steel #316 Ball) Lever Handle Female Threaded Ends
WRA25FWA	LOGI VALVE	DN25 PN25 Copper Alloy (DR Brass) Right Angle Ball Valve (Stainless Steel #316 Ball) Wheel Handle Female Threaded Ends



Model Identification	Brand Name	Product Description
WRWP20F	LOGI VALVE	DN20 PN25 Copper Alloy (DR Brass) Right Angle Ball Valve (Stainless Steel #316 Ball) Wheel Handle with Female Threaded x Press Fit Ends
WRWPE20	LOGI VALVE	DN20 Copper Alloy (DR Brass) Right Angle Ball Valve (Stainless Steel #316 Ball) Extendable Lockable Handle with Female Threaded x Press Fit Ends
WRWPE25	LOGI VALVE	DN25 PN25 Copper Alloy (DR Brass) Right Angle Ball Valve (Stainless Steel #316 Ball) Extendable Lockable Handle with Female Threaded x Press Fit Ends
WB25FBLH	LOGI VALVE	DN25 PN25 Copper Alloy (DR Brass) Ball Valve (Stainless Steel #316 Ball) Lever Handle (Long) Female Threaded Ends
WB25MBLH	LOGI VALVE	DN25 PN25 Copper Alloy (DR Brass) Ball Valve (Stainless Steel #316 Ball) with Lever Handle (Long) Male x Female Threaded Ends



APPENDIX D - SUPPLIER CONTACTS

Austworld Commodities Pty Ltd
2/24 Export Drive
Molendinar QLD 4214

Phone: 1300 780 430

Fax: 1300 780 441

Email: alex.raso@austworld.com.au



Melbourne Office

Level 8, Suite 8.02
401 Docklands Drive
Docklands VIC 3008

Sydney Office

Level 9 420 George Street
Sydney NSW 2000
GPO Box 915
Sydney NSW 2001

P +61 (0) 3 8605 7666
email: info@wsaa.asn.au

www.wsaa.asn.au